



UCIMU-SISTEMI PER PRODURRE



# LO STATO DELLA ROBOTICA IN ITALIA E NEL MONDO

Conferenza stampa

## La robotica industriale in Italia nel 2020

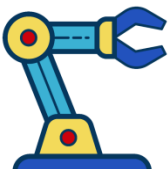
**Stefania Pigozzi**

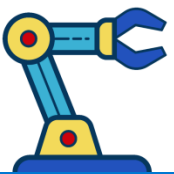
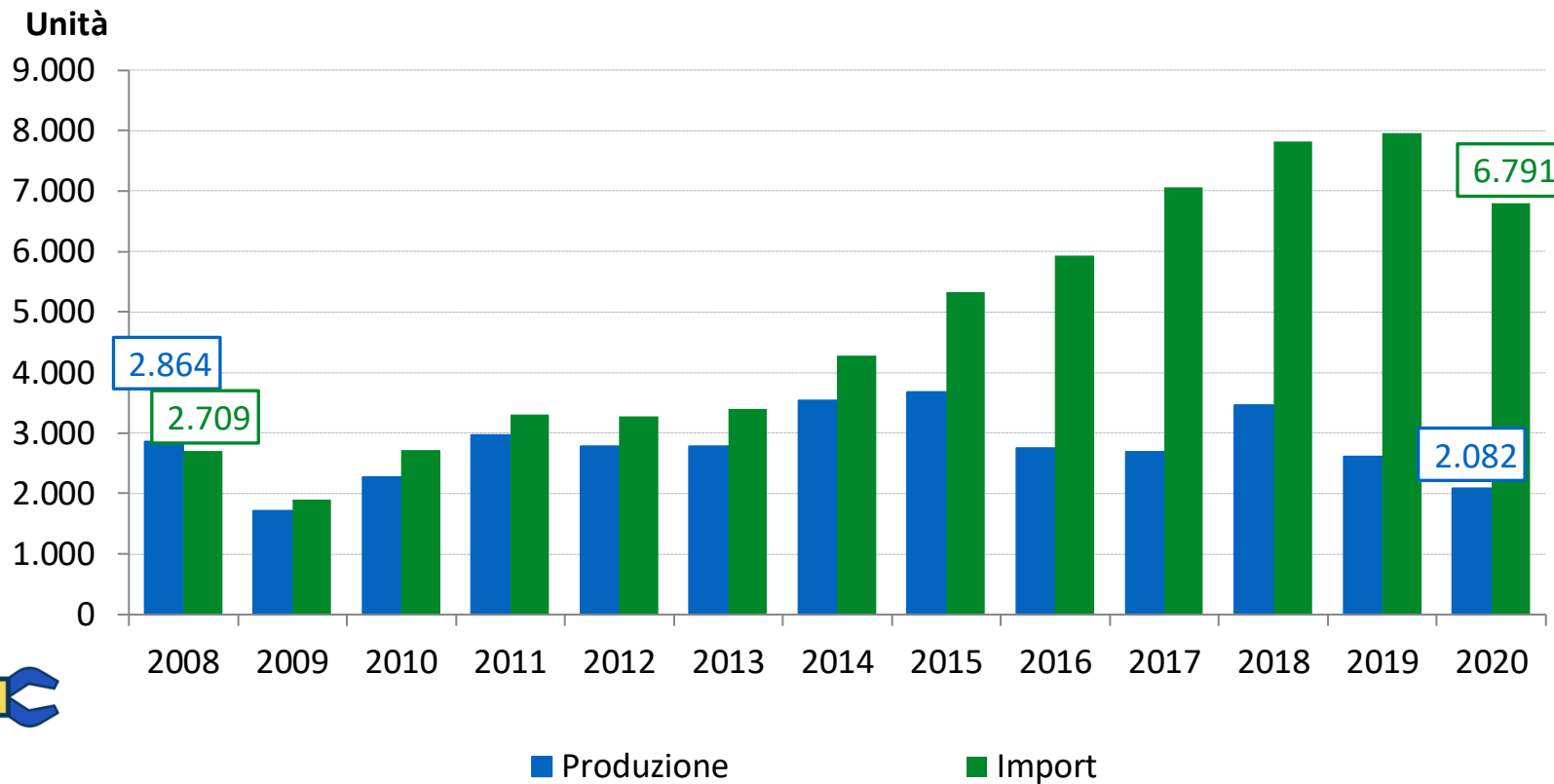
Responsabile CS&CI UCIMU-SISTEMI PER PRODURRE

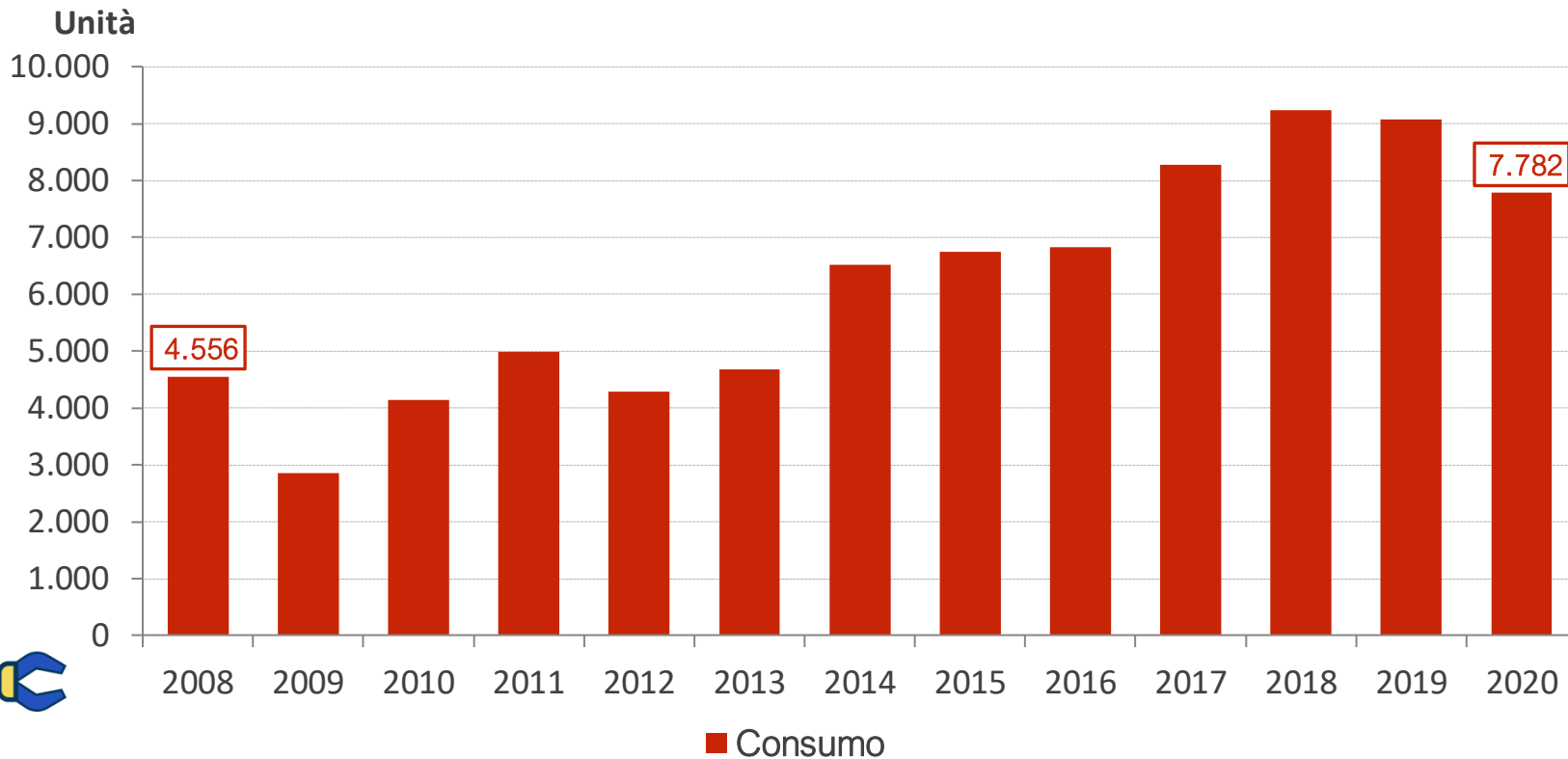
**26 maggio 2021**

*11:00 - 12:30*

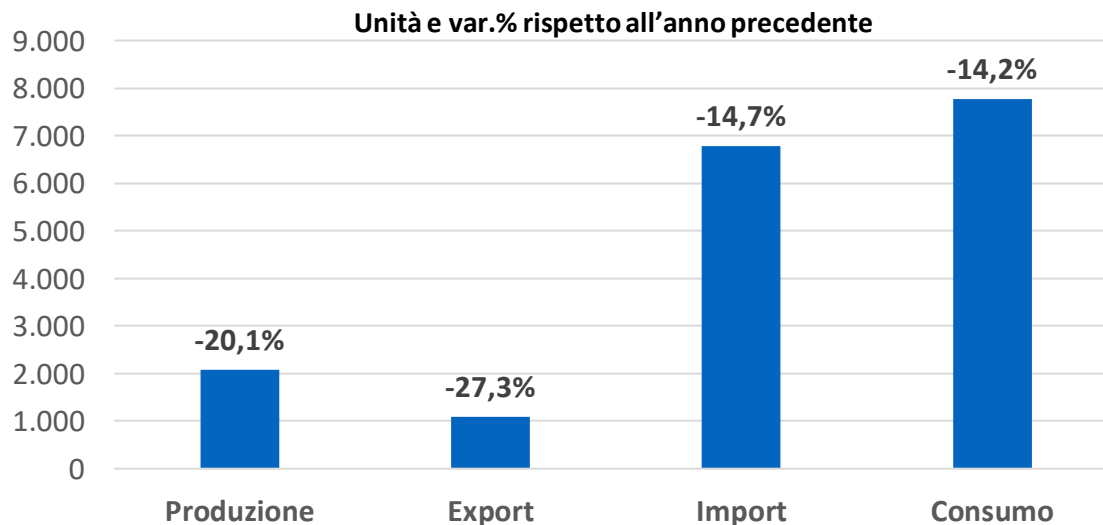
Publi**Tec**  
DEFORMAZIONE





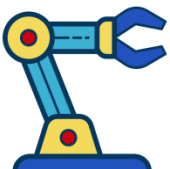


- Nel 2020 sono stati prodotti 2.082 robot, in calo del 20,1% rispetto al 2019, di cui il 52,4% venduti all'estero.
- Complessivamente il consumo di robot ha registrato un calo del 14,2% rispetto al 2019; l'87,3% della domanda è stata soddisfatta dai costruttori stranieri, che hanno visto calare le loro vendite del 14,7%.

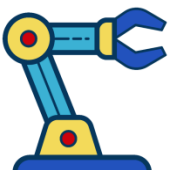
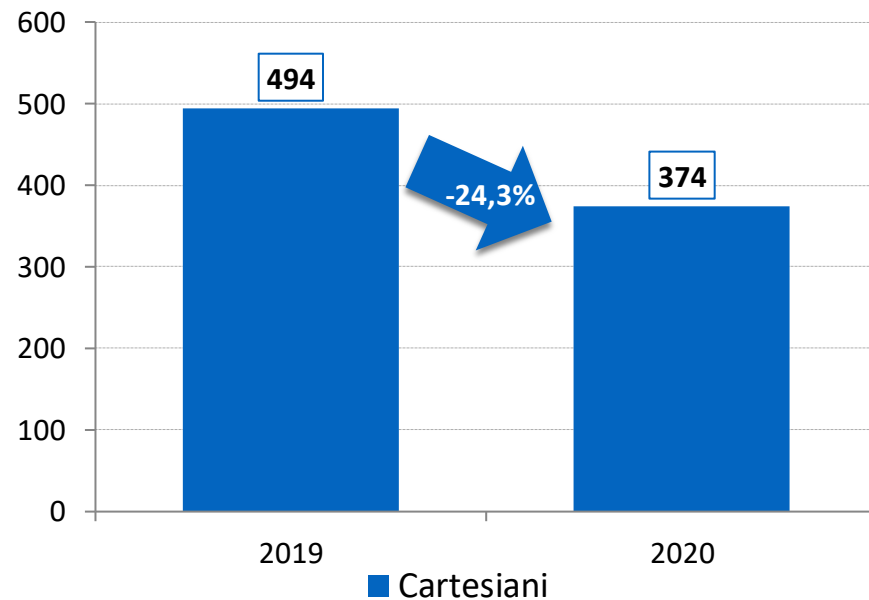
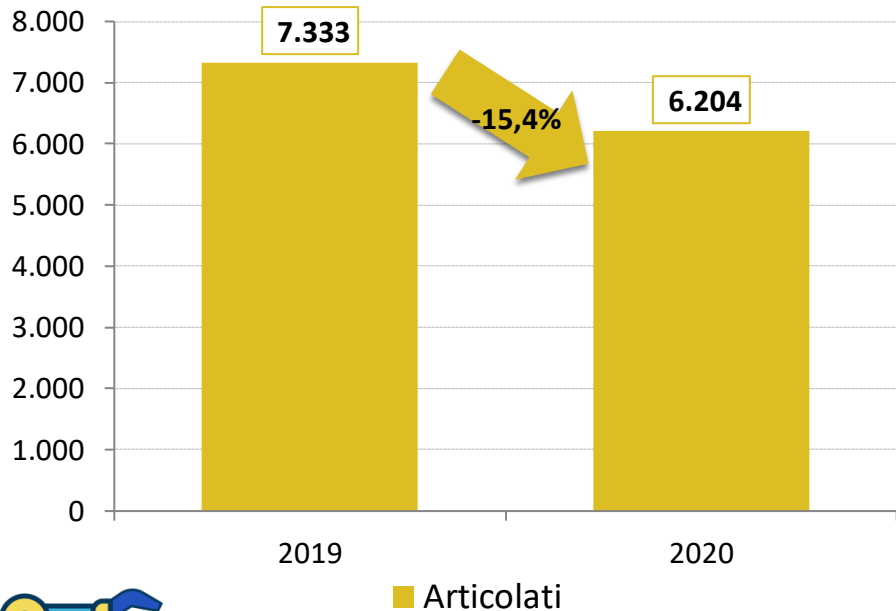


Unità	Articolati	Cartesiani	Scara	Totale*
Produzione	1.451	595	n.s.	2.082
Export	706	376	n.s.	1.091
Import	5.459	155	854	6.791
Consumo	6.204	374	881	7.782

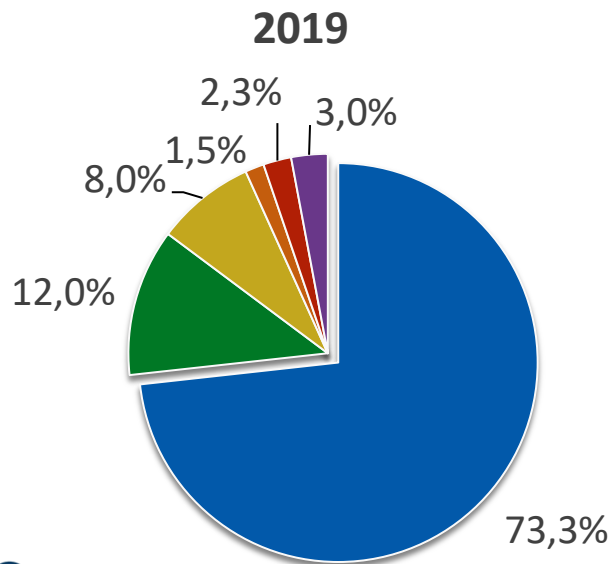
*\*comprende i robot a cinematica parallela*



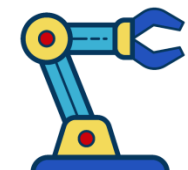
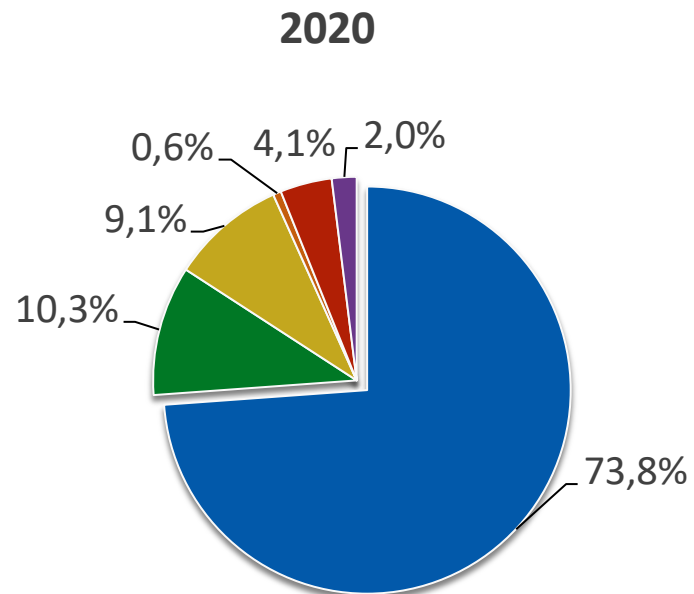
# I ROBOT ARTICOLATI E I ROBOT CARTESIANI: LA DOMANDA



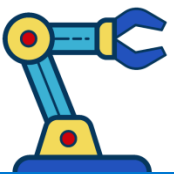
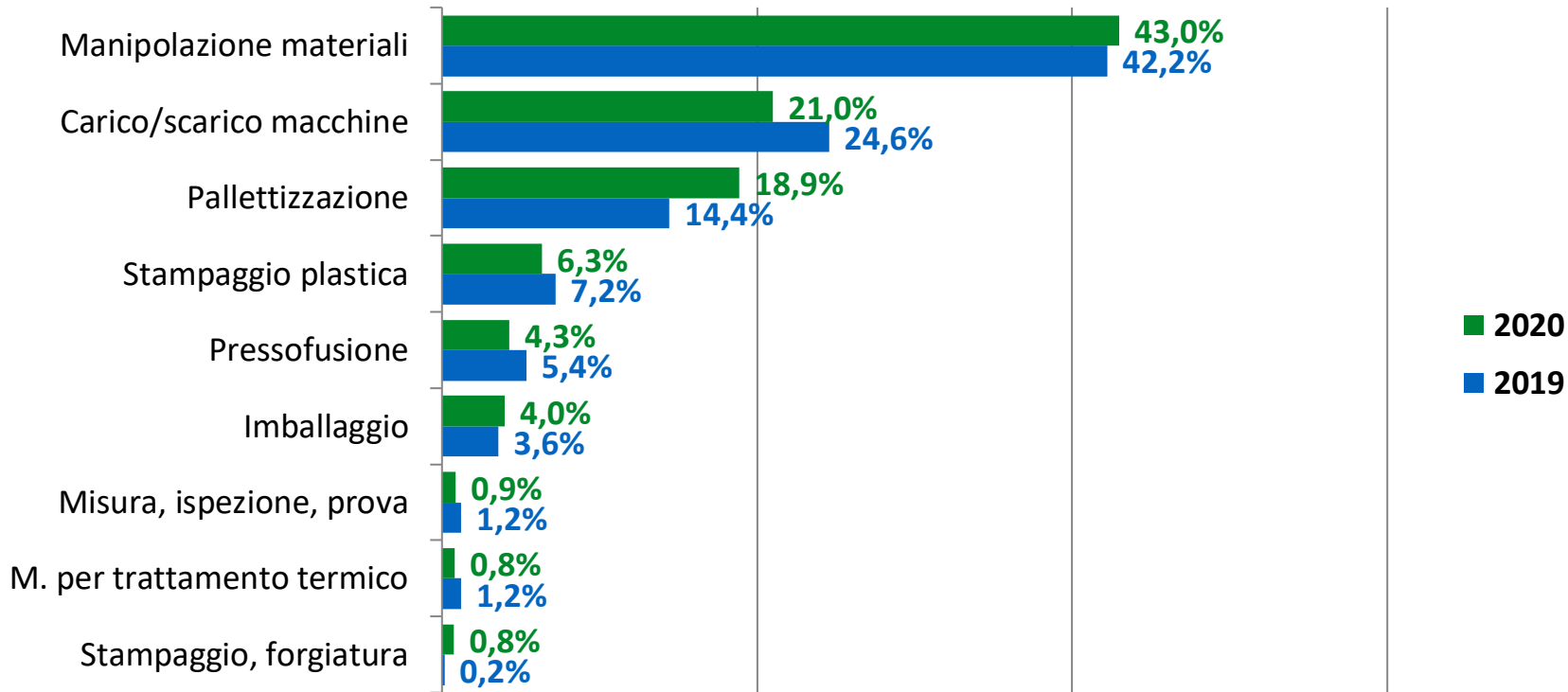
## Quote % sul totale consumo



- Manipolazione
- Saldatura
- Assiemaggio
- Distribuzione di sostanze



## Quote % sul totale manipolazione

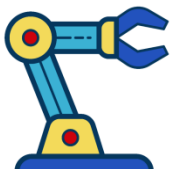




L'82,5% dei **robot** destinati alla manipolazione sono di tipo **articolato**.

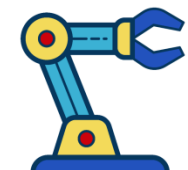
### Consumo

	Articolati	Totale*
2019	5.569	6.644
2020	4.739	5.747



## Unità

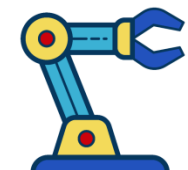
Consumo	2019	2020
Ad arco	671	483
A punti	412	319
<b>Totale</b>	<b>1.083</b>	<b>802</b>



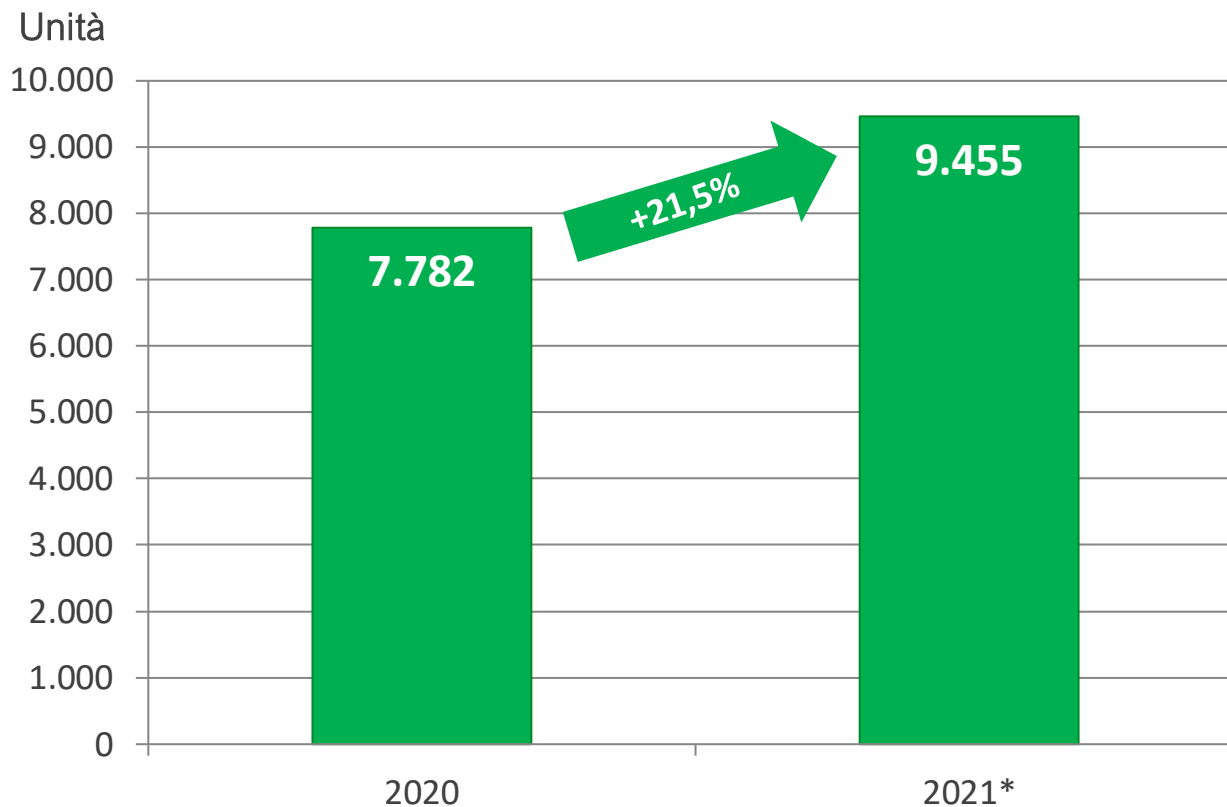
## Unità

Consumo	2019	2020
Assiemaggio meccanico/accoppiamento	265	196
Inserimento, montaggio	410	449
<b>Totale*</b>	<b>729</b>	<b>710</b>

*\*comprende la voce altri*



# ROBOT INSTALLATI IN ITALIA NEL 2021: LE PREVISIONI



Fonte: UCIMU, GdL SIRI

\*previsioni

