

# MOTOMAN NEXT: LA SOLUZIONE ALL-IN-ONE PER LA FABBRICA INTELLIGENTE

Matteo Castellari – SY Sales Manager  
Marco Dessì – SW Application Manager





A Global Technology Leader,  
A European Partner

- Fausto Chiri – Sales Director
- Marco Dessì – SW Application Manager

**YASKAWA**

Advancing your  
automation performance

# Introducing Yaskawa

Advancing Automation

**Driven by our vision of a smarter future, we deliver long-lasting and reliable automation technologies that save the world precious time and energy.**

Through a spirit of partnerships, we provide the mechatronic and robotic solutions that help companies optimize their performance and productivity.

Leading the way in the competitive and rapidly evolving world of industrial automation.

Supported by highly reliable partnership and services.



# Expertise with Experience

---

Founded in Japan in 1915

---

1969 - The inventor of mechatronics

---

1977 – Motoman L10

---

1985 – Digital Controlled Inverter Drive

---

2025 – Motoman Next / iCube Control

---



Advancing your  
automation performance

**Keiichiro Yasukawa**, the promoter of Yaskawa absorbed new knowledge and philosophies from the West. He engaged himself in mining, later expanding his business to spinning, steel, railway and banking.

He personally funded the opening of Meiji College of Technology, a vocational school for training engineers. The school later became Kyushu Institute of Technology, and continues to educate numerous engineers to this day.



Promoter

In 1915, electric motors started to advance into all industrial segments as replacements for steam engines.

**Daigoro Yasukawa**, the fifth son of Keiichiro, was among those who learned the fundamentals of the leading-edge technology of the time. With his father promising "to provide financial support, but not interfere with the way you run the business," Daigoro founded the Yaskawa Electric Manufacturing Co., our predecessor.

The company started its business by manufacturing electric motors for mining, where the imported products dominated and domestically produced motors were scarce.



安川電機製作所 (Yasukawa Denki Seisakusho)

# Automating The World

---

## Four international regional hubs:

Japan, the Americas, Asia and Europe

---

An active presence in **over 30 countries**

---

**A worldwide service** ideal for international corporations

---

**Global locations** offering capabilities from R&D and manufacturing to sales and after-sales support

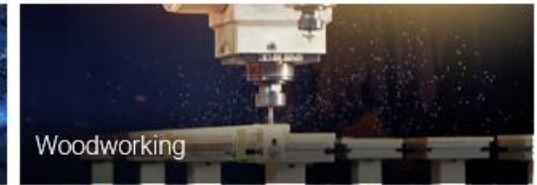
Our **EMEA** Presence:

Europe  
Middle East  
Africa



# Making Life Better For Everyone

We talk to our customers  
and we help them in the  
different industries to  
improve their performance  
using our products and  
systems



---

### GP Series

Multi-purpose industrial robots

---

### GA Series

High-precision laser

---

### HD Series

Hygienic and cleanroom use

---

### MotoMINI

Our smallest 6-axis high-speed industrial robot

---

### SIA Series

Slim robots ideal for assembly, inspection, machine tending and material handling in tight spaces

---

### MPP Series

Ideal for high-speed pick, place, and pack tasks

# Meet the MOTOMANs

Our Industry-Leading Robot Family



---

### PL Series

Automated palletizing

---

### AR Series

Arc welding and thermal cutting

---

### SP Series

Spot welding robots

---

### GG Series

Heavy welding equipment for friction stir welding

---

### SDA Series

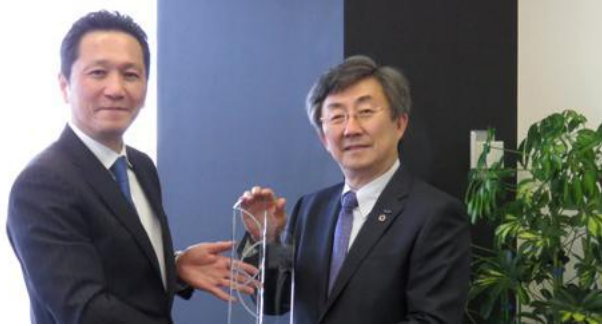
Dual-arm robots with human-like form that enable automation without reconfiguring existing setups

---

### MPK Series

Designed for high-speed picking and packing in hygiene-critical environments

# Our Winning Way With Automation



Six-time Clarivate  
Top 100 Global Innovator



**YASKAWA** Advancing your  
automation performance



The Deming Prize for excellence  
in quality management



Red Dot Awards  
for product design



**MOTOMAN NEXT**  
Redefining Adaptive Robotic Automation



# The All-In-One Solution for Adaptive Robotic Automation and AI

**YASKAWA**

Advancing your  
automation performance



**YASKAWA**

Advancing your  
automation performance

# AI-DRIVEN ROBOTICS: A NEW ERA



NEW  
MANIPULATORS

ALL-IN-ONE  
SOFTWARE  
PACKAGE

HARDWARE  
YASKAWA

**YASKAWA**

Advancing your  
automation performance

# AI-DRIVEN ROBOTICS: A NEW ERA

**MOTOMAN NEXT**  
Redefining Adaptive Factory Automation



Without AI

**Predictable, engineered Workflows**



Robot Jobs



With AI

**Adapt and execute tasks autonomously**



Robot Skills

## The NEXT Way to Program Adaptive Robots

**Users – Instructing the Robot simply WHAT to Do**

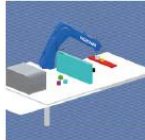
What



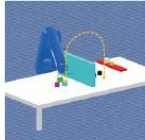
Workflow & Icons



Hand Guiding



Pick and place the (unknown) part



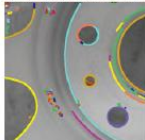
Move from A-B (avoiding collision)

**Programmers – Coding Skills defining HOW to Do**

How



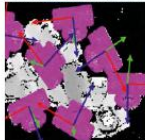
Vision & CAD



Part Recognition



Powerful Code Modules

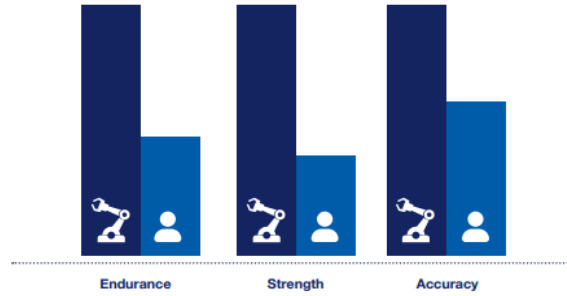


Vision/AI - Point Cloud

# AI-DRIVEN ROBOTICS: A NEW ERA

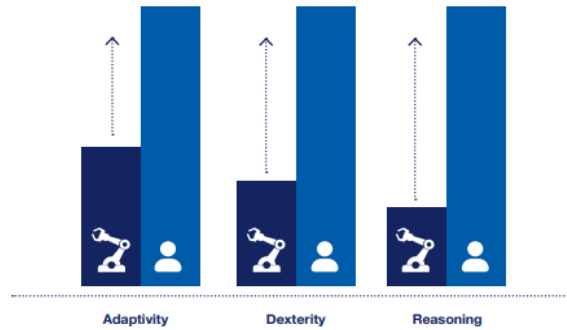
## Skills covered by traditional robots

---



## Skills covered by Artificial Intelligence (AI)

---



# AI-DRIVEN ROBOTICS: A NEW ERA



OT

## MOTOMAN closes the gap between OT & IT

## OT (Operational Technology)

Quality: Perfect integration of robots and production lines. Motion Control Safety.

Communication based on I/O Signals, Pulses,

## Information Technology

Functionality: HMI/Visualisation, Simulation, Offline Simulation, Digital Twin, Monitoring, Machine Learning, ROS

Communication based on Data.



YNX1000

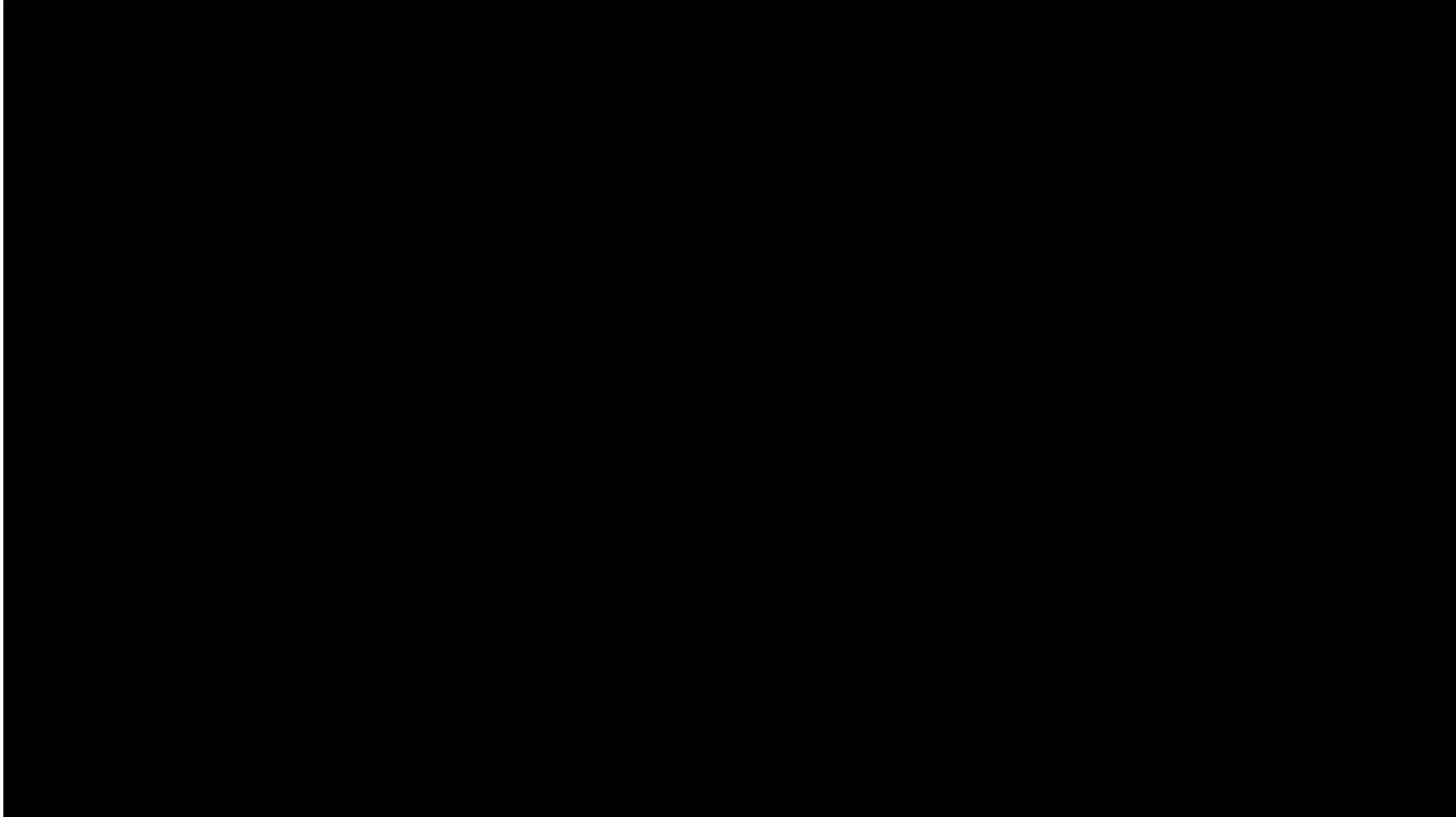
RCU

ACU

**ACU UNIT WITH NVIDIA® Jetson Orin™ NX**

CPU: 8-core Arm Cortex-A78AE v8.2 64-bit (2MB L2 + 4MB L3)  
GPU: 1024-core NVIDIA Ampere architecture, 32 Tensor Cores  
AI Performance: Sparse: 100 INT8 TOPS (for AI Inference), Dense: 50 INT8 TOPS (for AI training)  
Memory: 16 GB 128-bit LPDDR5 DRAM  
Storage: 256 GB NVMe SSD, 100 GB available for application

# AI-DRIVEN ROBOTICS: A NEW ERA



# AI-DRIVEN ROBOTICS: A NEW ERA



**YASKAWA**

**MOTOMAN NEXT**

Advancing your  
automation performance

01

## System Integrators:

Safe and smart entry into the fascinating world of adaptive Robots and AI.

02

## Software Developers:

Standard Linux Docker Compose on professional NVIDIA® hardware for maximum freedom of code.

Pre-installed Services to cover all robot-related motion/ vision/ sensor/ AI functionality.

Professional Digital Twin Engineering Tools are included in the package without reoccurring license cost.

03

## End Customers:

Can realize new robotic automation use cases solving their labour shortage trouble and cutting their costs.

04

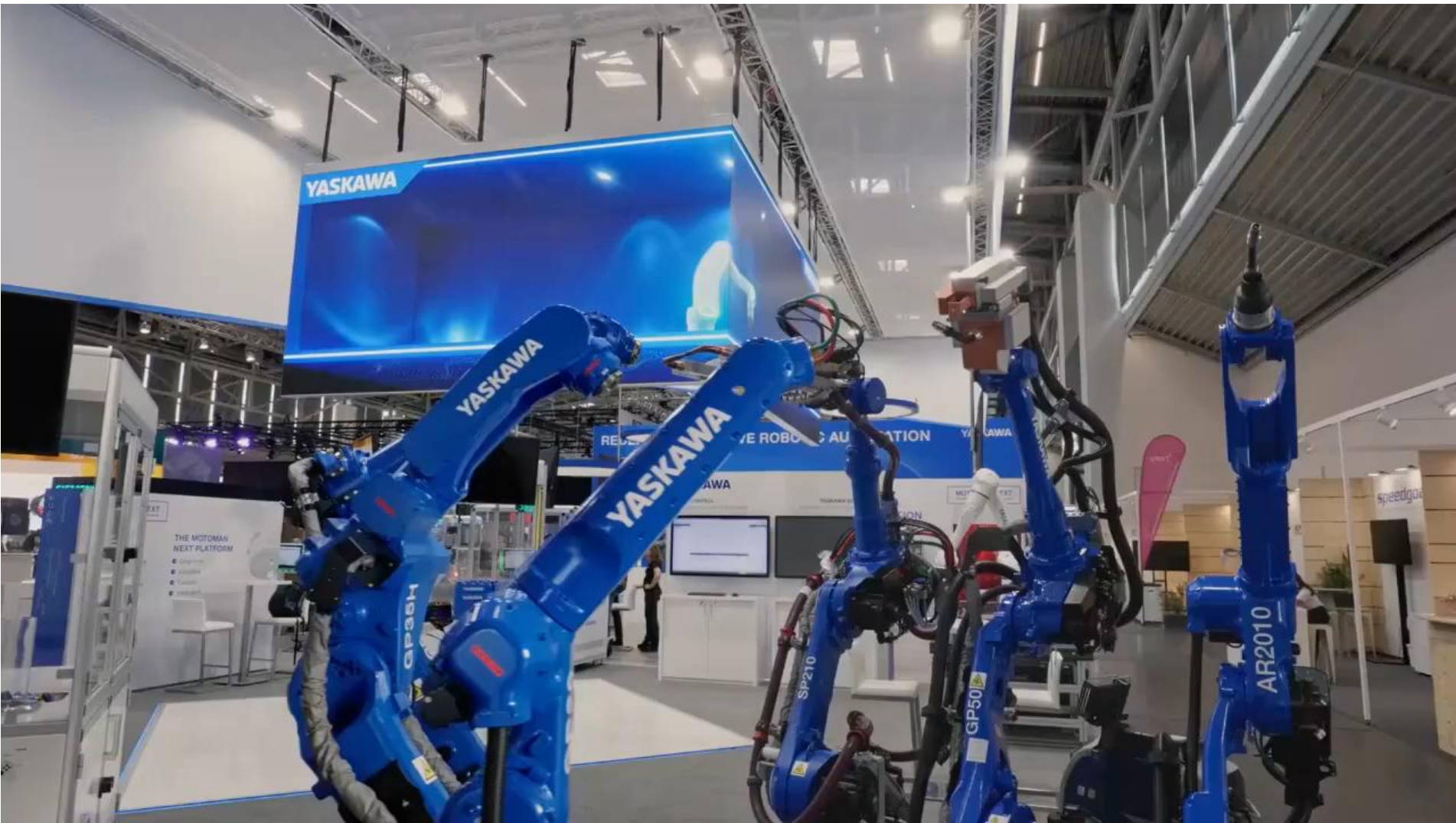
## Professional Robotic AI Application Deployment

with the backbone of Yaskawa - a worldwide leading supplier of robot, drive, automation and software technology.

**YASKAWA**

# AUTOMATICA BOOTH





**YASKAWA**

Advancing your  
automation performance

Thank you!  
Any questions?



**YASKAWA**

Advancing your  
automation performance